

Glove Box Lock

Can-Am Commanders and Maverick (Not X3)



Kit includes

- 1x Mounting plate
- 2x 6mm screws
- 1x Threaded Rod
- 1x Nut for Threaded Rod
- 1x Key assembly (with 1x key and 1x backing Nut)

Tools needed

- Slotted Screwdriver
- Drill
- 3/8" drill bit
- 11/16" drill bit (Can also use unibit step drill bit)
- 5/16" drill bit
- 4mm ball end Allen Wrench
- Adjustable wrench (or SAE Combination wrench set)



Installation

1. You do not need to remove the glovebox door but will need to release the limit latch on the left side to be able to open the door further for drilling access. (I did for picture taking)

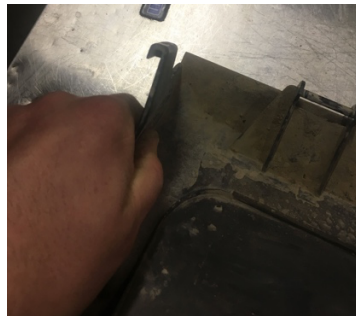


Figure 1 Limiting Latch

2. Press towards the right to release the Limiting Latch (Figure 1.) This will allow the door to open further.
3. With a slotted screwdriver apply pressure to the release tab/hinge, then pull straight out on the handle to remove.



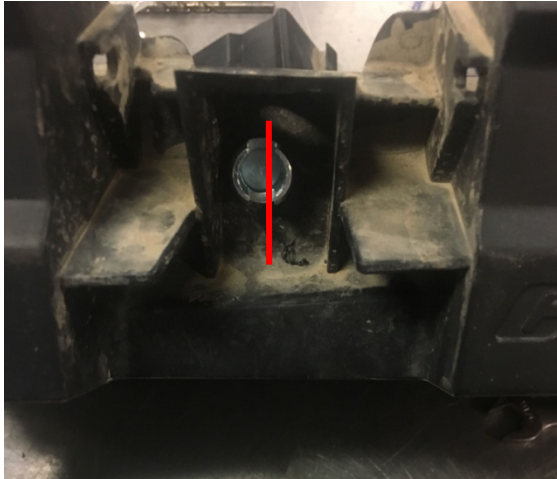
4. Place the template on the backside of the glove box, you will use this to locate the holes you will need to drill (This is about 1/8" taller than the actual part). Make sure the edges of the mounting plate template are aligned with the handle indent molding. Mark the location of the holes remove the plate for drilling.



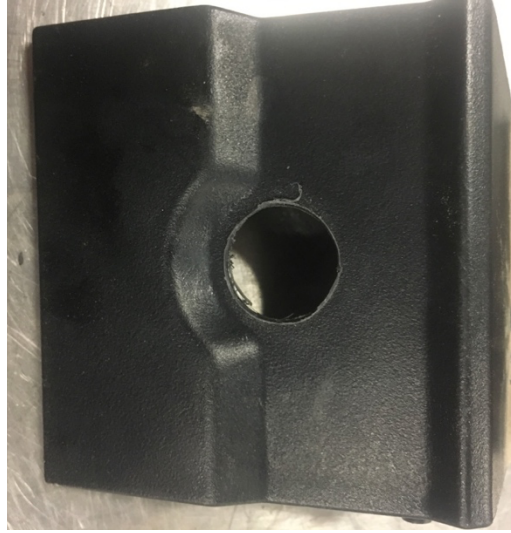
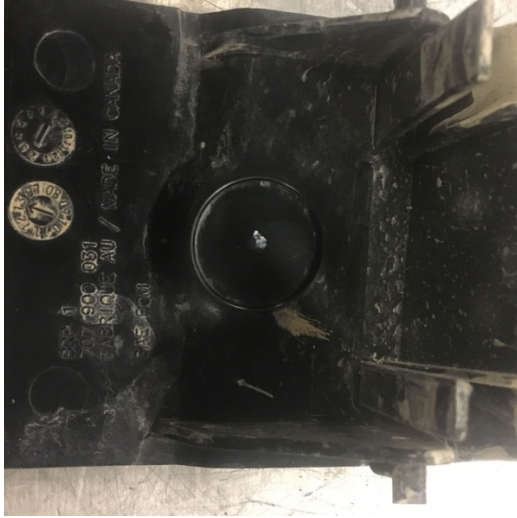
5. Drill the center hole to 3/8" and the two smaller holes on the ends to 5/16"
6. Install the mounting plate loosely with 2 allen screws. You will tighten up after installing the center threaded rod. (you might need a ball end allen to be able to reach)



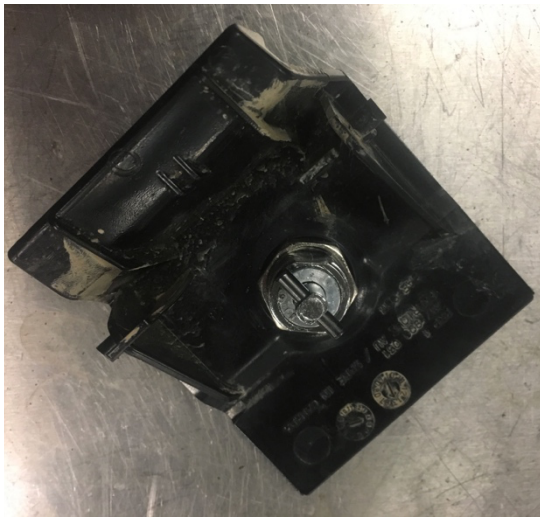
7. Install the center rod and tighten down the Allen bolts (you might want to add thread locker to them also).
8. Screw the center rod all the way in and align the opening vertically, Install the backing nut from behind and tighten.



9. The glove box side is now done and we will move to the handle.
10. On the backside of the handle there is a circle impression, we will use this as alignment for the 11/16" hole.
11. Find the center and drill to 11/16"



12. Install the lock assembly and align the locking pin vertically to the handle so it will mate with the threaded rod.



13. Reinstall the handle by aligning the tabs/hinge and pressing straight in, just make sure the 2 tabs that act as springs are on top of the glovebox assembly.

We will try to post a video of installation to our site when time permits

